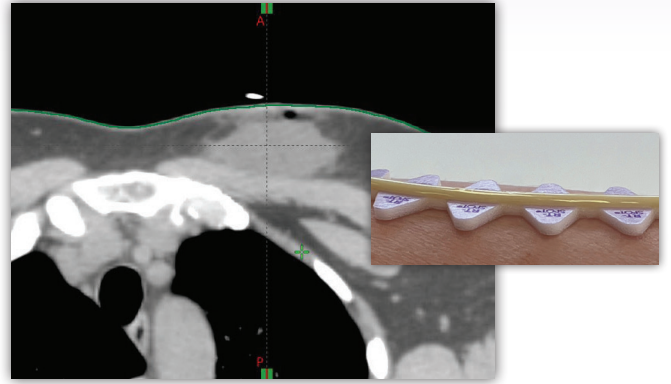


RT-SPOT®

Why Radiology Departments Prefer RT-SPOT Elevated Skin Markers Over Other Markers for CT Simulation and Treatment Planning



Huge Time Saver

"It has been a huge time saver from a planning perspective having the wire automatically excluded from the body and not having to carve it out by hand. Huge time savings during contouring for dosimetry."

- Dosimetrist, Conway, AR

Markers Do Not Create Artifact

"As a dosimetrist it is very nice when the markers do not create artifact on the skin's surface. We find this product helpful for all electron or superficial cases. Less time editing body/CT wire contours/overriding density. Easy workflow for dosimetry."

- Dosimetrist, Midland, MI

Easy to Use, Adheres Well to Skin

"They are easy to use and adhere well to the skin without causing any kind of irritation, and they make the treatment planning process easier. It has made our CT simulation process easier as well as our treatment planning process."

- Radiation Therapist, Ogdensburg, NY

Allows for a Clean Auto-Contour

"Love the spacing between the body tissue and the radiopaque line and how it allows for a clean auto-contour of the body without artifacts. Saves time for dosimetry and physician in contouring and is helpful for surface image guidance fidelity."

- Physicist, Northfield, MN

A Smoother, More Accurate PTV

"RT-SPOT line eliminates the need for me to adjust the body contour slice by slice to exclude the wire. This saves a lot of time and produces a smoother, more accurate PTV when using the crop function in our treatment planning system - especially for plans like IMRT chest wall and other superficial treatments that have a lot of wire in the scan."

- Dosimetrist, Tyler, TX

Shapes the Target Area More Easily

"RT-SPOT line eliminates so much time that I would spend modifying the body contour to exclude the wire. It has saved the dosimetrists a lot of contouring time, and RT-SPOT line is very flexible, so it allows the physicians to shape the targeted area more easily."

- Dosimetrist, Bloomington, IN

No More Worries About Contouring

"We were an early adopter of the RT-SPOT line, and really like the elevated wire and how it functions within our TPS (Eclipse). No more worries about contouring out of the body structure, particularly for 'sensitive' regions like electron breast boosts. It marks surgical scars very well without the dosimetry team needing to worry about falsely expanding the true body contour."


- Physicist, Charleston, SC

RT-SPOT is the only skin marker for CT simulation that is elevated from the skin line which helps to exclude the marker from the automatic body contour.

- ▶ Minimizes dose perturbation and helps ensure dose accuracy
- ▶ Saves time by reducing the need for manual contouring and overriding density
- ▶ Flexible and easier to form into desired shapes
- ▶ Stays in place on the skin and does not lift
- ▶ Lower density, non-metallic line, minimizes artifact





To order or request a sample, call 1.800.233.5539, email info@beekley.com, or visit beekley.com

 Manufactured by Beekley Corporation
One Prestige Lane, Bristol, CT 06010-7454 USA
Tel: 1.800.233.5539 or +1.860.583.4700
Fax: 1.800.735.1234 beekley.com

BEEKLEY, BEEKLEY MEDICAL, RT-SPOT, SPOT, and WHEN YOUR DIAGNOSIS MUST BE RIGHT are Reg. U.S. Pat. & Tm. Off. BEEKLEY, RT-SPOT, and SPOT are registered Community Trademarks. BEEKLEY is a registered trademark in Canada. © 2023 Beekley Corporation. All rights reserved.

WARNINGS AND PRECAUTIONS:

- Do Not Use in Skin Folds
- Do Not Use Under Physical Bolus
- Single Patient Use Only; Do Not Reuse 
- External Use Only; Do Not Ingest or Swallow
- Do Not Place on Compromised Skin
- Remove After Use
- Not Made With Natural Rubber Latex
- Lead-Free
- Non-Sterile 

REF 127



Beekley Medical®
when your diagnosis must be right™

REV: RTS_TM_1123